



Information for Teachers: Schools at Erasmus Darwin House



Erasmus Darwin House (EDH) is a gem of a house in the centre of Lichfield adjacent to Lichfield Cathedral.

Dr. Erasmus Darwin, scientist, inventor, poet, leading light of the Lunar Society and grandfather of Charles Darwin, lived here in the late eighteenth century.

The house includes a recreation of the family's living room and of Dr. Darwin's study, the original cellars where the kitchen was located, a room dedicated to science and inventions, and plenty of space for school activities. Outside there is the garden, which contains plants which were used for 18th century medicine.

Access to the house is safe and easy. We have a team of trained Education Volunteers who will lead activities for your pupils.

What can we offer you?

We offer a package of activities which immerse you in the Georgian life of the famous Dr. Erasmus Darwin, in his own home, using our wide range of artefacts and other resources: the complete Georgian Experience.

We offer activities which inspire your pupils to follow in the footsteps of the scientist, doctor, inventor and member of the 18th century Lunar Society, in the very house where he conducted his research.



All our activities are linked to the current Primary Framework:

| Subject area | KS | Curriculum topic | EDH activities |
|--------------|-----|--|--------------------------|
| History | KS1 | Significant historical events, people or places in your locality | The Georgian Experience |
| History | KS2 | An aspect of history or a site dating from a period beyond 1066 that is significant in your locality | The Georgian Experience |
| Science | KS1 | Everyday materials (Y1/2) | Evolution in the Kitchen |
| Science | KS2 | Rocks and fossils (Y3) | Fascinating Fossils |
| | | Magnets (Y3) | Magic Magnets |
| | | Light (Y3 and Y6) | Pinhole Pictures |
| | | Sound (Y4) | The Science of Sound |
| | | Animals including humans - the human body (Y4 and Y6) | Darwin's Dissection |
| | | Living things and their habitats (Y4) | Explore the Galapagos |
| | | Evolution (Y6) | Explore the Galapagos |

All activities are offered at Erasmus Darwin House. Alternatively, some activities can be brought to your school as part of our Outreach Programme.

Your choice of activities - History

Dr. Darwin the Georgian – the Georgian Experience

Darwin the Doctor

Who was Erasmus Darwin? What did he do? Why is he an important historical figure? Investigate the man in the very house he lived in.

Packing Dr Darwin's Bag

Dr Darwin has been called out to visit a patient. What should he take with him? How do his preparations for a journey compare with what we might take with us today? What can we learn about how he might treat his patients compared with modern medical treatment?

What shall we wear?

Help Mrs. Darwin solve her wardrobe crisis. Dress as a Georgian child and learn about the clothes and associated everyday objects of the day.

What's in the Kitchen?

Train to be the new kitchen servant. There's work to be done, with all of the new Georgian gadgets to become acquainted with.

Evolution in the Kitchen

Explore the equipment used in a Georgian Kitchen and compare it with modern domestic equipment. What has changed and what has stayed the same? Why? (Also available as a Science activity.)

Darwin's Dissection

Visit the cellars of the house to see where Dr. Darwin carried out dissections. Through active learning find out about how your body works. (Also available as a Science activity.)



Your choice of activities - Science

Dr. Darwin the scientist – enhancing the Science Curriculum

Darwin's Dissection

Visit the cellars of the house to see where Dr. Darwin carried out dissections. Through active learning find out about how your body works. (Also available as a History activity)

Magic Magnets

Use the invisible force of magnetism to move objects without touching them, like Dr. Darwin did in order to trick his friends.

Pinhole Pictures

Make a pinhole camera to experience how light travels and creates images.

Fascinating Fossils

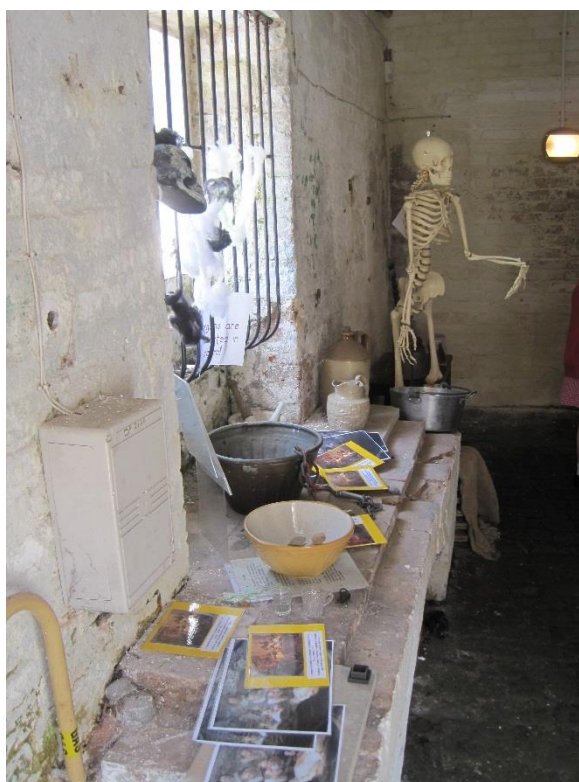
Experience millions of years on the Stairs of Time and explore how fossils were made. Find out, as Darwin did, what we can learn from fossils.

Evolution in the Kitchen

Explore the equipment used in a Georgian Kitchen and compare it with modern domestic equipment. What has changed and what has stayed the same? Why? (Also available as a History activity.)

Evolution and Natural Selection

See next page for our Galapagos workshops which explore topics relating evolution and natural selection.



to

Your choice of activities - Evolution

Dr. Darwin the 'Grandfather of Evolution' – explore evolution and natural selection in the Galapagos

This package, devised in partnership with the Galapagos Conservation Trust (<https://galapagosconservation.org.uk/>), explores aspects of evolution. The activities use resources based on the Galapagos Islands, where Erasmus Darwin's grandson, Charles Darwin, developed ideas which had been suggested fifty years earlier by Erasmus.

The Nature of Natural Selection

Investigate the concept of natural selection focusing on how animals use camouflage as an effective means of species survival. Play the camouflage game and then explore why different birds have differently shaped beaks.

In the Land of Giants

Find out how the Galapagos Giant Tortoises have evolved to survive in the different environments within the Galapagos archipelago. Make a tortoise carapace to suit the environment.

Amazing Adaptations – the Marine Iguana

Discover how the Marine Iguana, one of the strangest animals in the Galapagos, evolved from their land ancestors into the marine animal of today. Design an iguana raft.



© Galapagos Conservation Trust

Practicalities – Planning your visit

We request a minimum of six weeks' notice when you book a visit.

Half day visit

Recommended minimum visit time: 2 hours.

£4 per child. Maximum of one class.

Each child participates in two activities.

Full day visit

Recommended minimum visit time: 4 hours (including lunch break)

£7 per child (including use of lunch room). Maximum of one class.

Each child participates in three activities in greater depth.

Make a day of it: “Learn with Lichfield’s Leading Lights” – Erasmus Darwin House and The Samuel Johnson Birthplace.

Whole day.

£4 per child at Erasmus Darwin House. Price at Samuel Johnson Birthplace available from <http://www.samueljohnsonbirthplace.org.uk/>

Maximum of two classes. Each class spends half a day in each venue. Lunch room available for hire at Erasmus Darwin House.

This joint package with The Samuel Johnson Birthplace, which is within easy walking distance of Erasmus Darwin House, offers a combination of history, science and literacy in two different historic houses.



Outreach programme

Recommended time: 2 hours

£150 for a two hour visit to your school.

Discovery Boxes

Boxes of resources which can be borrowed for use in school. Maximum loan of one week @ £20, + £50 returnable deposit. Additional charges for delivery and collection.

We can be flexible to fit in with the time you have available. Please contact us to discuss possibilities.

Practicalities

Numbers

Erasmus Darwin House can accommodate up to one class (approx. 30 children). The individual activities are designed for groups of 12 - 15 children.

Toilets

Erasmus Darwin House has one female and one male toilet. The female toilet is also accessible for wheelchair users.

Lunch provision

Children may eat lunch in the House (charges may apply) or, weather permitting, in Beacon Park. This is a public park immediately across the road from Erasmus Darwin House, via a light-controlled pedestrian crossing.

Accessibility

A lift, which can accommodate wheelchairs, gives access to all floors. There is an accessible toilet on the ground floor.

Availability

School visits are welcome at any time during the week.

Getting here

Coaches can stop on Beacon Street, next to Beacon Park, to set down and pick up. There is a light-controlled pedestrian crossing nearby.

Lichfield City station (for trains on the Cross City line) is approximately 10 minutes walk from EDH, and the route is mostly along pedestrianised streets. If you walk, we recommend that you approach EDH via the entrance from Lichfield Cathedral Close, which leads through the garden to the House.

How to book:

Start by contacting the Education Co-ordinator at EDH (contact details below). Please plan your visit as far in advance as possible. This gives time to accommodate your requests. The minimum booking time is six weeks. Bookings depend on the availability of members of the EDH Education team to run your requested activities.

IMPORTANT: The **date of your visit is confirmed** when we send you the booking form showing the date and your chosen activities. **If you want to change the date** after we have sent you the booking form, there will be an **additional charge** of £50 to cover the administrative costs of re-arranging.

Contact us:

Erasmus Darwin House, Beacon Street, Lichfield, Staffordshire WS13 7AD

Tel.: 01543 306260 E: enquiries@erasmusdarwin.org Website: www.erasmusdarwin.org

Supporting information: Risks and Responsibilities - 1

Risk Assessment for School Visits to Erasmus Darwin House: General Safety Measures

Erasmus Darwin House strongly recommends that teachers make a FREE preliminary visit to the House in advance of bringing a school party. Teachers are advised to phone or email in advance to arrange a convenient time.

The following **general safety measures** have been put in place:

- 1 Programme for the visit issued to school and to EDH volunteers prior to visit.
- 2 School briefs children and all accompanying adults, in advance of visit, regarding behaviour appropriate to a museum and the nature of the visit.
- 3 EDH staff brief the group on arrival detailing layout of EDH and emergency procedures.
- 4 School staff (which, for the purposes of this document, includes any other accompanying adults such as Teaching Assistants or parents) are responsible for the children at all times. Pupils under the age of 16 must be supervised at all times.
- 5 Ratio of children to adults (i.e. school staff and any other accompanying adults) should be at least 1 adult to 10 children at KS2, KS3, and KS4; at least 1 adult to 6 children at KS1.
- 6 Each group within the party has an appointed adult as team leader, arranged prior to visit. All team leaders carry a list of the children in their group.
- 7 A team of EDH Education Volunteers (EDH EVs), identifiable by name badges, is in EDH throughout the visit. They are trained in the emergency procedures.
- 8 First Aid is available at EDH reception and in the EDH office above the Stables.
- 9 Full fire alert and alarm system is in place with evacuation procedures.

In addition, schools are asked:

- (a) Not to eat and drink in the museum except in the designated areas.
- (b) To treat other visitors and EDH staff with respect.
- (c) To ensure that teachers and all other accompanying adults wear identity badges which are clearly visible.

Supporting information: Risks and Responsibilities - 2

Specific Risks

| Risk | Action | Level of risk |
|--|--|----------------------|
| Slips and trips on stairs; getting stuck in banisters | Pupils to be supervised at all times. Public areas cleaned and checked by EDH staff. Handrails in place. | Low |
| Finger traps in lift door | Schools are asked not to use lift except in case of mobility difficulties. Pupils using lift to be accompanied by an adult. Warning message 'doors closing' in lift. Lift alarm in place. Emergency telephone in lift in place. | Low |
| Contact with/damage to exhibits | Pupils to be supervised at all times. Pupils to be asked not to touch any exhibits other than those designed for inter-active use. Barriers in place to keep visitors away from fragile exhibits. Warning signage for specific exhibits in place. | Low |
| Lost children | Briefing on arrival to indicate layout of museum. Museum staffed by EDH EVs, identifiable by name badges. School staff to carry list of children in their group. | Low |
| Trips on uneven cellar floor | Pupils to be supervised at all times. Children visiting cellar to be briefed by EDH staff immediately before visiting. | Low |
| Trips and slips on garden paths and steps | Pupils to be supervised at all times. Children visiting garden to be briefed by EDH staff immediately before visiting. | Low |
| Contact with/damage to plants in garden | Pupils to be told not to touch plants in the garden unless given specific permission to do so. Pupils to be supervised at all times. Handwashing facilities available. | Low |
| Trips or slips in toilets, misbehaviour, getting locked in | Children to be supervised by school staff when using toilets. Toilets cleaned and inspected regularly by EDH staff. Procedures in place for cleaning spillages. Toilets can be accessed from outside by adults if children locked in. Alarms are in toilets. | Low |
| Theft from, or damage to, stock in shop | Pupils to be supervised at all times. | Low |

Supporting information: Risks and Responsibilities - 3

Responsibilities

During a school visit, Erasmus Darwin staff and volunteers will:

- 1 Provide space where children's coats and bags may be left (at owners' risk).
- 2 Produce an interesting and stimulating environment for schools activities.
- 3 Supply the necessary equipment for the activities.
- 4 Set up before and clear away after the activities.
- 5 Run the activities.
- 6 Be responsible for the overall supervision of children doing the activities.
- 7 If lunch room is booked, provide rubbish sacks.

During a school visit, school staff and any other adults accompanying the school group (in a ratio of at least 1 adult to 10 children) will:

- 1 Organise the children into groups before arrival.
- 2 Supervise safe storage of children's and teachers' coats and bags; teachers and pupils are responsible for their own belongings
- 3 **Give active support to the children** in doing the activity.
- 4 **Be responsible for the behaviour** and control of children.
- 5 Take pupils to toilet as necessary. N.B. no child must be allowed to leave the activity room unaccompanied.
- 6 Deal with accidents/incidents and with pupils who feel ill or need other attention. N.B. children must not leave the activity room unaccompanied.
- 7 If lunch room is booked, supervise eating of lunch in designated room including tidying up all rubbish into the rubbish sacks provided.

